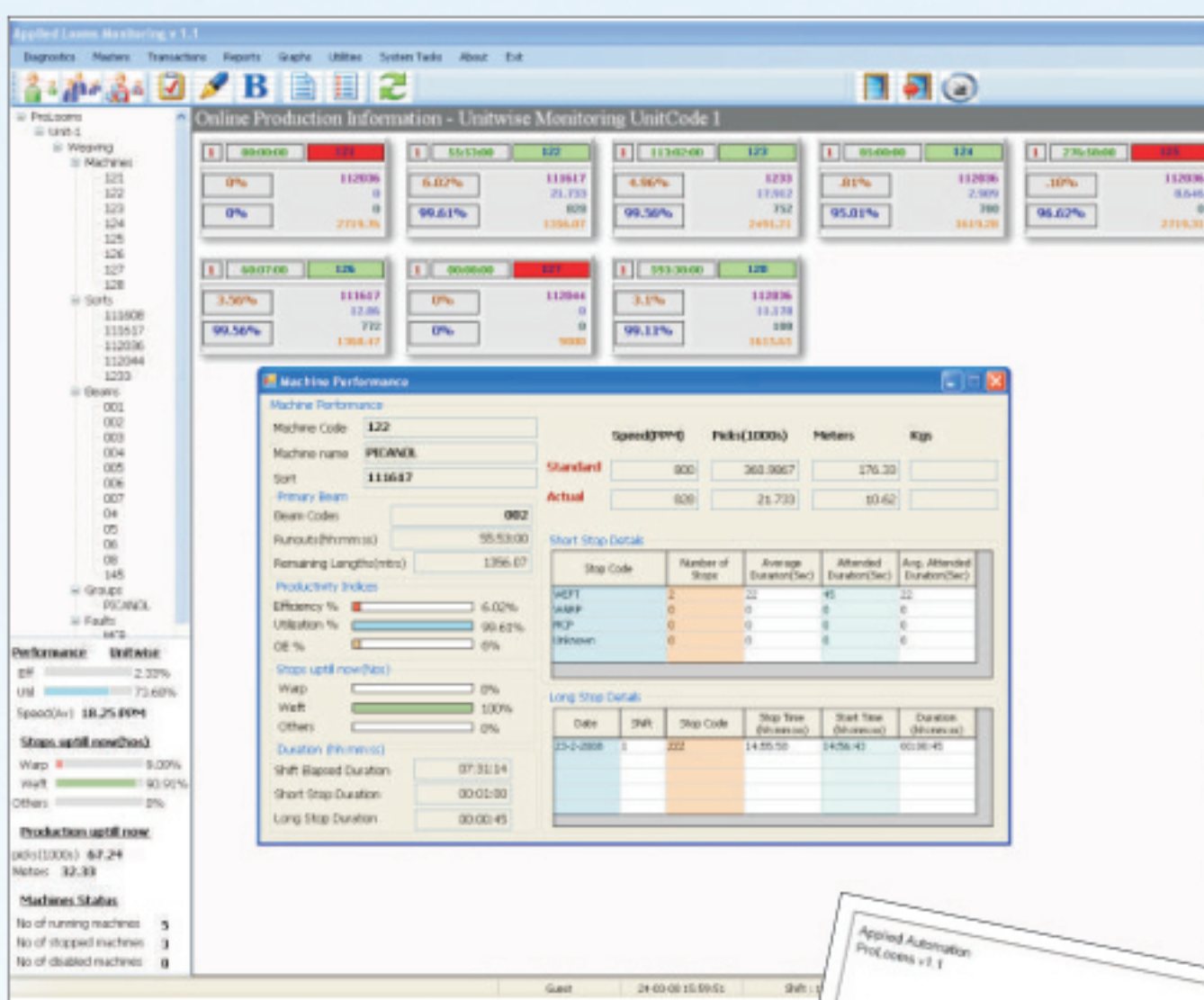


ProLooms X10 is powerful production management tool for Textile Weaving mills. Textile mills are faced with increasing competitive pressures and challenges. To operate in this situation calls for sophisticated systems to monitor and manage the production processes efficiently. ProLooms X10 is an answer to this need.

Now Available in Wired and Wireless Technology

The System helps to

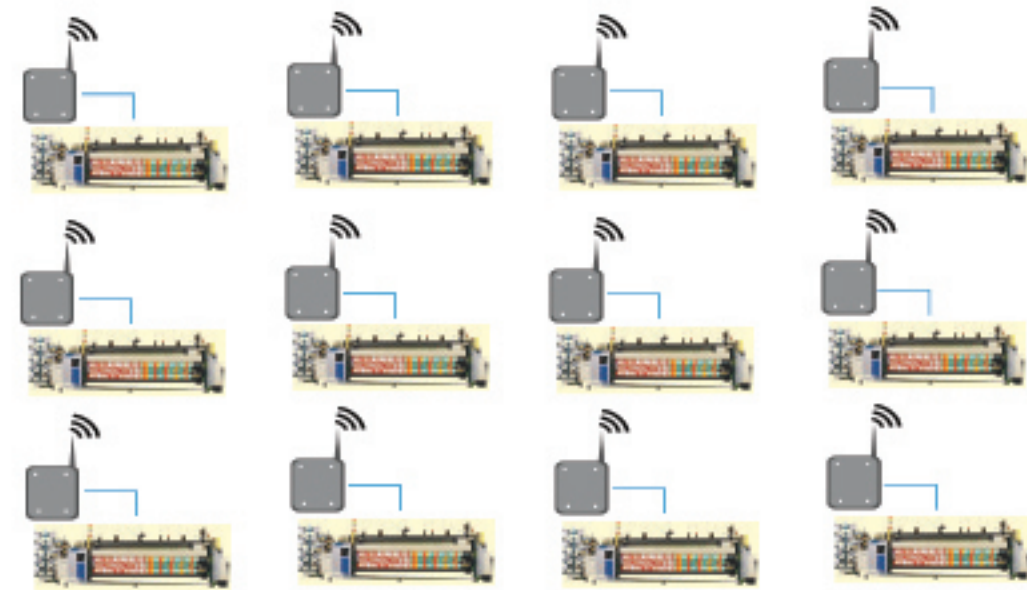
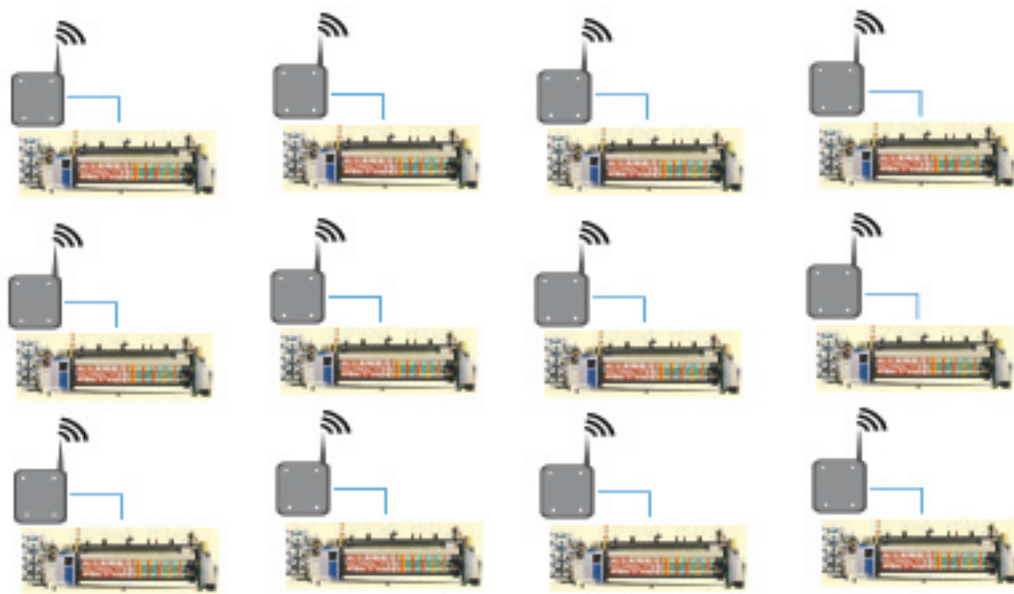
- * Get error free production and stoppage data automatically from the Looms
- Monitor online the running status of all the Looms
- * Manage Beam changes easily as systems predicts when they will run out on each Loom
- * Minimise downtimes by knowing about loom stoppages immediately
- Control warp, Weft and other faults with online data
- * View picks, metres, efficiency and utilization figures and reports graphically
- * Analyse current and long term performance data and take decisions
- * Keep production records accurately without much staff time



Open Architecture

The ProLooms X10 system is based on an open architecture. It employs state of the art backend electronics like centralised PLCs or Wireless nodes installed on each machines and industrial communication interfaces like Ethernet.

Any make or model of looms current and future can be connected to the system. The software runs on most networks available today and is based on standard databases and environments making it very versatile and can be linked to most ERP's.



ProLooms X10

Monitors

Picks, PPM, Efficiency, Utilization
Warp, Weft and other faults
Beam run outs

Controls

Beam changes

Reports

Production in picks, meters,
Efficiency, Utilization for any
period and online
Stoppage data reasonwise,
faultwise
Beam change history

Generates

Bar, Pie and line
graphs for all the above

Interfaces

To ERP s/w like
SAP, DATATEX
and INTEX
OpenERP

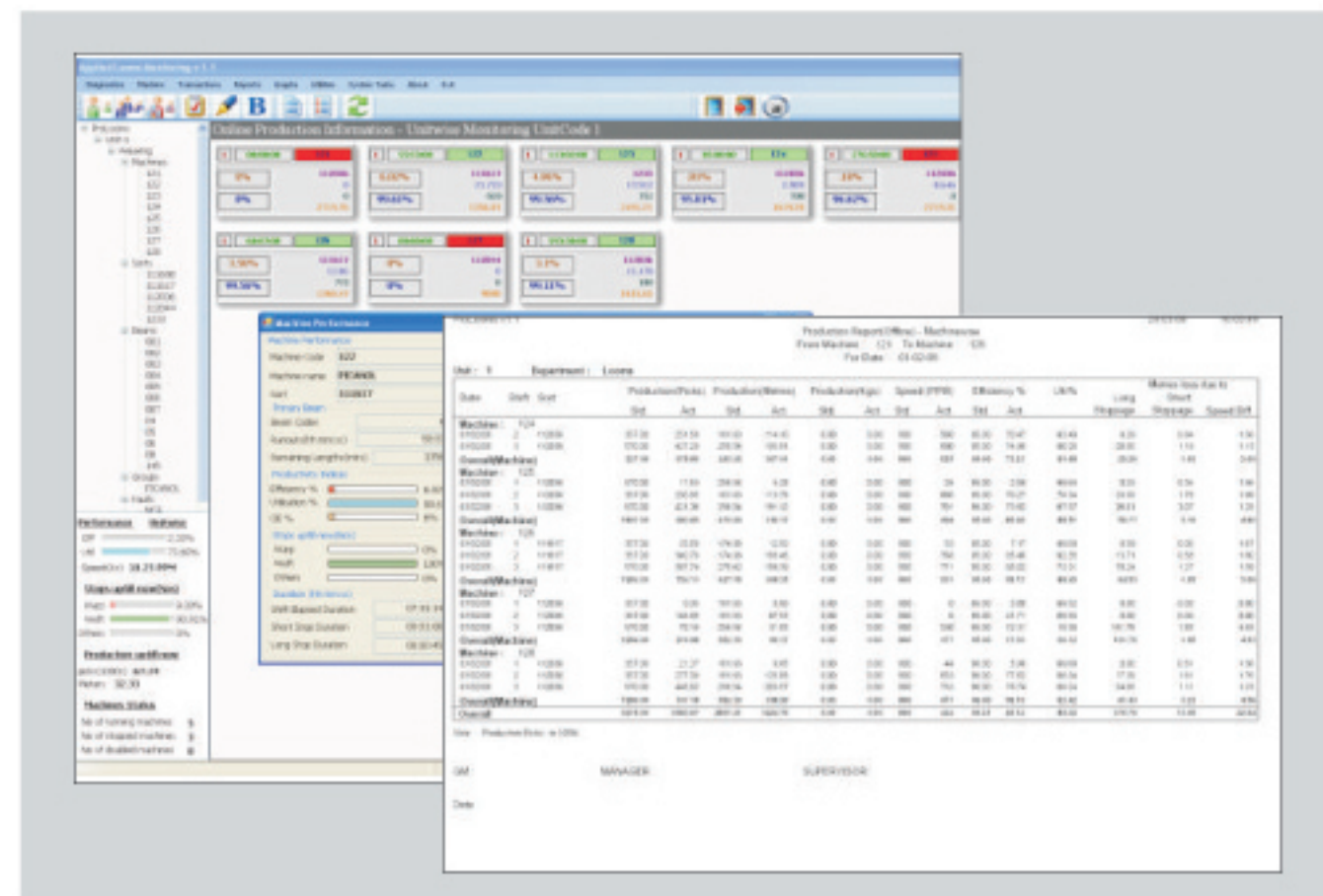
Technical specifications

System Information

- ProLooms Server : Industrial Computer on Windows/Linux/Mac
- Network and Clients : Clients based Computers on Browser
- Control Electronics : Simatic programmable PLC with Industrial Ethernet
Applied AIO Nodes Each Machine with Wireless
- Interfaces : Profibus, Ethernet, Applied Wireless Communication
- Looms : All makes & models

Data Specification

- Database Supported : MS SQL Express / PostgreSQL
- Storage Time Frames : Can go upto 36 months based on Database choice
- Shift Schedule : Upto 4 shifts



* Trademark/Copyright patent rights of all products mentioned by name vest with respective manufacturers
* Product specifications subject to change without notice due to continuous improvements

APPLIED

Applied Automation Systems Private Limited
SF No 415, Codissia Road, Peelamedu Coimbatore - 641 004 India
Ph : +91 422 654 1633 Fax : +91 422 251 2633
info@aspl.net
www.aspl.net

